

# LOOKBOOK 2019



A **valmont**  COMPANY



Project: *St James Chapel*

[www.locker.com.au](http://www.locker.com.au)



# KING STREET CAR PARK

## MASCOT

 **ARCHITECT:** VANOVA TUON ARCHITECTS

 **PRODUCT:** PERFORATED PANELS

King Street Car Park in Mascot serves the busy commercial district as well as Kingsford Smith International Airport. Like so many Locker projects, it is a high profile and heavily used structure.

Working closely with Vanovac Tuon Architects and Taylor Construction, our brief required us to satisfy both functional and aesthetic elements of a new articulated facade.

We used Clarity 800 Perforated Panels for this project, with perforations of 7.94mm, staggered at 9.53mm centres. This allowed us to satisfy the minimum open area requirement of 50 per cent. The completed facade had an open area of 62 per cent.

A large open area was very important for ventilation. Among the benefits of perforated panel facades is that they allow for good airflow, while also protecting buildings and people from wind, rain and the sun.

Some of the panels were coloured green or yellow to help improve the aesthetic appeal of the facade. Perforated panels are an excellent way to give an existing building a revamp without doing any work on the actual structure.

The King Street Car Park project was a great success and showcased Locker's experience, product range and ability to work effectively with different architects and builders.



# TARONGA INSTITUTE OF SCIENCE AND LEARNING

## MOSMAN



 **ARCHITECT:** NBRS ARCHITECTURE

 **PRODUCT:** PERFORATED PANELS

The Taronga Institute of Science and Learning is a world-class educational institution housed within Sydney's famous Taronga Zoo. It has a strong commitment to educate and inspire children and young people, promoting a better understanding of the natural environment and STEM subjects.

The Institute is a living laboratory that includes scientific spaces, classrooms and active animal habitats. It was officially opened in 2018 by the Duke and Duchess of Sussex (Prince Harry and Meghan Markle).

The Locker brief was to help give the building a striking, unique look, while meeting the highest environmental and sustainability standards.

We used a variety of perforated panels for both the facade and in the atrium of the building. Perforated panels are ideal for creating aesthetically appealing designs. In the case of the external facade in this project, we created a distinctive honeycomb effect.

As well as looking great, aluminium panels are also sustainable. All of the metal pieces Locker punches out to make our perforated panels are reused. Perforated panels allows for good airflow and protects the building from the sun, helping to manage the cost of regulating inside temperatures.

Once completed, the building was certified as a Six Star Green Star Design and As-Built building.



# THE SERVICES UNION

## SOUTH BRISBANE

 **ARCHITECT:** ARCHITECTUS

 **PRODUCT:** FOLDED PERF, POWDER-COATED WHITE

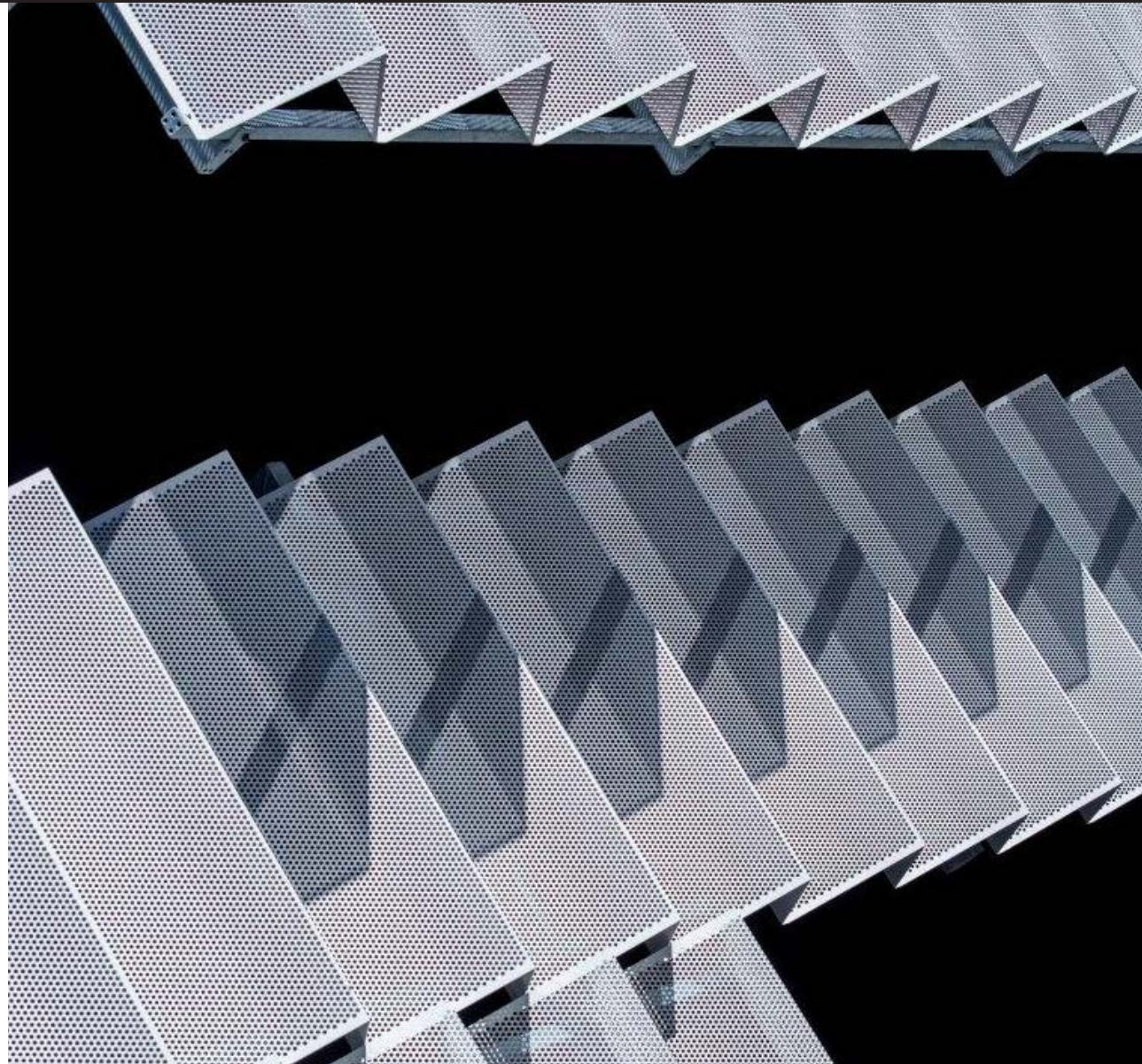
Locker offers extensive experience and a proven ability to deliver complex and demanding architectural visions. That's why leading architects, like Architectus, bring their designs to us.

The Brisbane Services Union building was an excellent example of close and effective collaboration with architects and designers. We created a customised system of perforated panels based on our popular Atmosphere product range.

In total, we used more than 60 panels of varying sizes, featuring 9.53 perforations, in the finished build.

The perforated panel facade gave the Brisbane Services Union building an eye-catching and original look and feel. It protected the building from the elements, while still allowing people inside to see out.

This challenging project was an excellent learning experience for Locker. We had to be innovative and flexible, but ultimately we were to contribute to a modern, dynamic building design that makes a great addition to Brisbane's Peel Street.





# JULIETTE CYCLEWAY OVERPASS

## BRISBANE



 **ARCHITECT:** ARUP, FORTITUDE VALLEY

 **PRODUCT:** POWDER-COATED WOVEN WIRE

The renovation of the Juliette Street Bridge in Brisbane was a key part of the city's efforts to revamp its cycleways. As part of its commitment to encouraging and promoting cycling, the state government wanted to ensure that its cycleways were modern, functional and aesthetically appealing.

Locker was able to bring its experience of working with woven wire to create a mesh for the bridge that was lightweight, easy to transport and quick to install. The woven wire mesh was locally made in Brisbane and at our production facility in New Zealand.

It was inter-crimped to increase locking tightness and rigidity. The steel was pre-galvanised to give the installation a lifespan of 25 years. This represented an excellent return on investment for the state government.

The Juliette Street Bridge is now one of the highlights along Brisbane's cycleways. The woven wire mesh provides an important safety barrier while also allowing cyclists to take in the sights.



# NORTHERN BEACHES HOSPITAL

## FRENCHS FOREST

 **ARCHITECT:** BVN ARCHITECTS

 **PRODUCT:** AURORA SYSTEM AND PERFORATED METAL

Locker provided its cornerstone perforated panels within the unique Aurora system to the facade of the Northern Beaches Hospital Car Park in Frenchs Forest.

The combination of the perforations within the metal sheeting and the permeability of Aurora has allowed for optimum airflow: a vital component of any car park exterior in order to release harmful emissions.

The facade also provides a durable enclosure system to offer pedestrians anti-fall protection as well as preventing cars from driving over the edge.

The resulting facade balances functionality with a pleasing aesthetic outcome with its contemporary and complementary design.





# CARINA BUS DEPOT BRISBANE



 **BUILDER:** A DART & CO

 **PRODUCT:** CHAMPAGNE PERFORATED,  
FOLDED AND POWDER-COATED

Built in 1969, the bus depot in Carina, which sits at the heart of the community, was looking a little tired, so in 2018 Brisbane City Council made the decision to give the facility a complete makeover.

As part of the overhaul, Locker's signature Champagne perforated panels were used on the new facade.

Perforated metal sheets are an excellent choice for a bus depot, being naturally noise-reducing, whilst also allowing for optimum airflow for the release of emissions

The Champagne panels, so named due to the bubbles of varying diameters, allowed the designers and architects to bring a unique look to their project,

For Carina, this was a key part of achieving the aesthetic objective along with some clever LED lighting installations behind the screens that take the facade to another level..

The resulting design will enable the depot to be part of future "Light Up Brisbane" initiatives and has given the structure a much more modern, refreshed look.



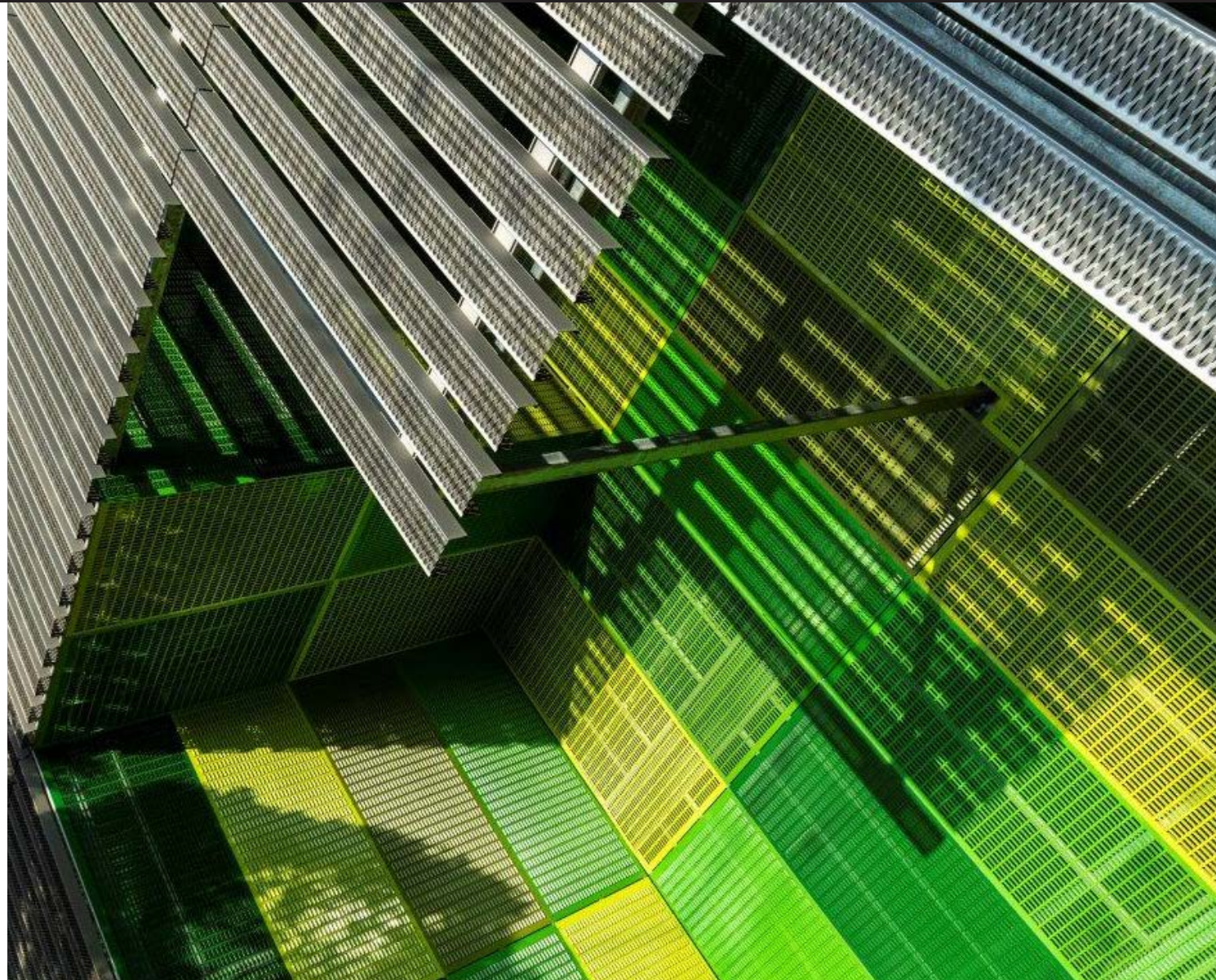
# HARROW STREET CARPARK

## BOX HILL

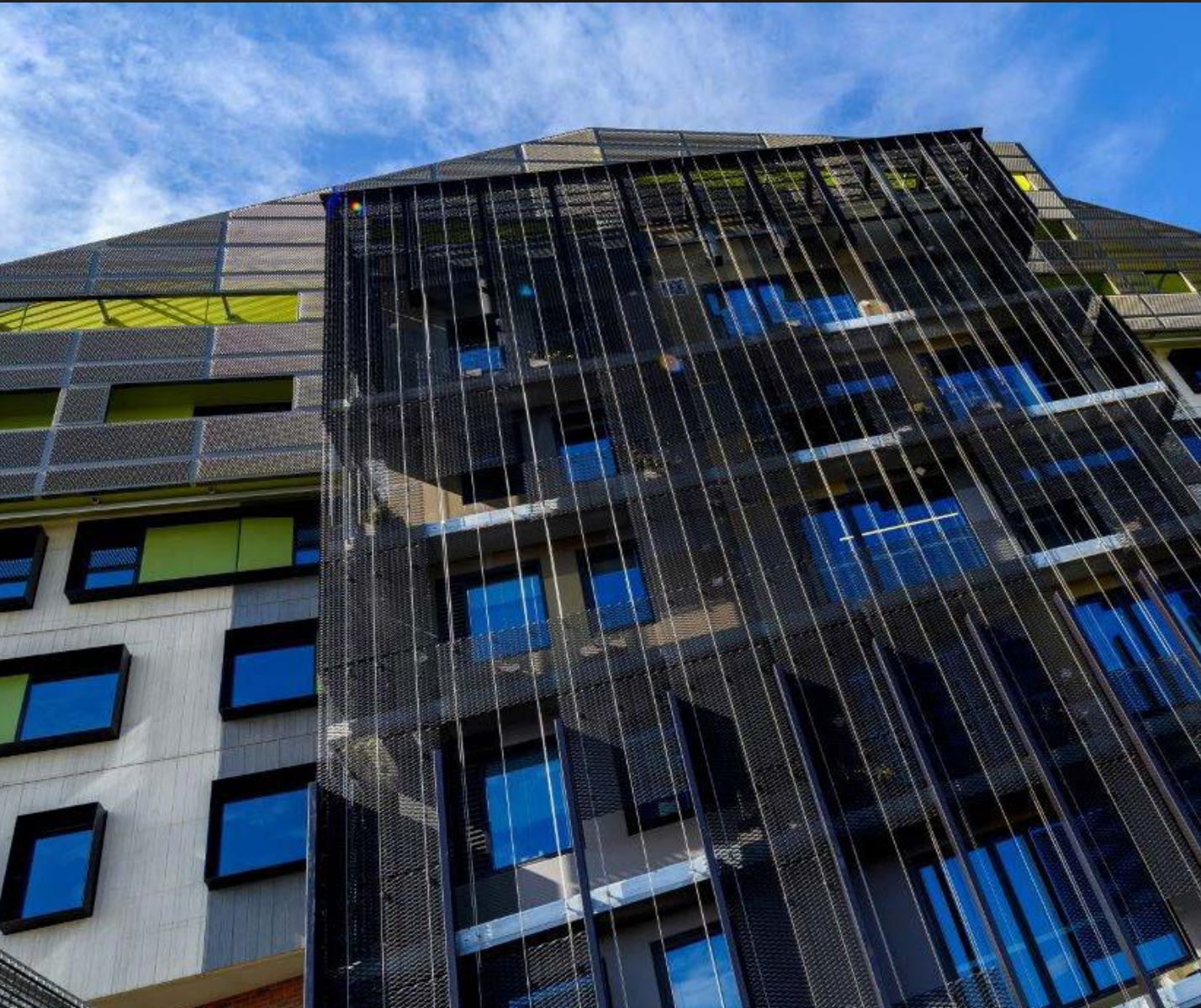
-  **ARCHITECT:** MGS ARCHITECTS
-  **BUILDERS:** BUXTON CONSTRUCTION
-  **PRODUCT:** PERFORATED AND GRIPSPAN METAL

Locker used custom Gripspan panels to create a flat facade for this five-level car park project in Box Hill. The project was completed in partnership with MGS Architects. Normally used for walkways only, MGS Architects could see a different way to utilise such an industrial product. The end result now has a unique feel with all the requirements of ventilation, sun shading and safety.

All visitors to Box Hill central now benefit from the 562 parking spaces in the immediate vicinity.







 **ARCHITECT:** MGS AND EVENTUALLY

 **PRODUCT:** PERFORATED AND EXPANDED METAL

This local landmark was redeveloped to become a world class support and accommodation hub for Melbourne's homeless community.

Locker's custom bronze perforated panels were used to create an eye-catching dragon scale effect. A bold green colour underneath the panels means the appearance of the facade changes throughout the day. Long-term plans are to have a vertical garden growing throughout the panels, further enhancing the aesthetic of the building.

The combination of the Sun 819 Expanded metal and the Atmosphere cabling system allows residents to enjoy optimum lighting without the harshness of the accompanying heat from the sun, due to the shape of the holes and the angle of the sheet. This has an added benefit of helping the facility to reduce lighting and HVAC costs and improve its environmental footprint.



# ST JAMES CHAPEL

## CASTLE HILL

 **ARCHITECT:** JACKSON TEECE

 **PRODUCT:** PIC PERF

St James Chapel is a central part of the Anglicare retirement living facility at Castle Hill.

Locker's Pic Perf product was instrumental in bringing Jackson Teece's bold architectural vision to life. The building and terrace spans a 940m<sup>2</sup> footprint and is composed of a ceramic clad building encasing the chapel, Dover Hall and supporting spaces.

Locker's Pic Perf was developed into a lightweight perforated aluminium veil to cover the structure, allowing a soft dappled light to filter through to the building underneath, thus creating an appropriate, attractive atmospheric effect.





# COOMERA EVENT CINEMAS

## COOMERA



 **FABRICATOR:** WATKINS STEEL

 **PRODUCT:** EXPANDED METAL 2515  
PROFILE POWDER-COATED

Locker's Expanded metal mesh combines durability with visual appeal. This made it the ideal solution for the decorative joinery screens inside the bar area of the Event Cinema in Coomera.

Locker worked closely with Watkins Steel to deliver the finished project: a modern, industrial aesthetic that is in-keeping with the rest of the build.



# CONTACT

## Melbourne

Locker Pty. Ltd.  
2 Cojo Place,  
Dandenong South,  
VIC 3175 Australia

ABN 99 004 353 922  
PHONE: +61 3 8791 1000  
FAX: +61 3 8791 1099  
EMAIL: sales.vic@locker.com.au

## Sydney

Locker Pty. Ltd.  
5 Enterprise Circuit,  
Prestons,  
NSW 2170 Australia

ABN 99 004 353 922  
PHONE: +61 2 8777 0400  
FAX: +61 2 8777 0499  
EMAIL: sales@locker.com.au

## Brisbane

Locker Pty. Ltd  
1149 Kingsford-Smith Drive  
Pinkenba,  
QLD 4008 Australia

ABN 99 004 353 922  
PHONE: +617 3859 8300  
FAX: +617 3859 8390  
EMAIL: sales.qld@locker.com.au

## Townsville

Locker Pty. Ltd.  
11 Forge Court  
Townsville  
QLD 4814 Australia

ABN 99 004 353 922  
PHONE: +61 7 4760 6700  
FAX: +61 7 4760 6799  
EMAIL: sales.fnq@locker.com.au

## Adelaide

Locker Pty. Ltd.  
358 Cormack Rd,  
Wingfield,  
SA 5013 Australia

ABN 99 004 353 922  
PHONE: +61 8 8169 2350  
EMAIL: sales.sa@locker.com.au

## Perth

Locker Pty. Ltd.  
41 Austin Avenue,  
Maddington,  
WA 6109 Australia

ABN 99 004 353 922  
PHONE: +61 8 9358 9100  
FAX: +61 8 9358 9111  
EMAIL: sales.wa@locker.com.au

## Auckland

Locker (NZ) Ltd.  
12 Offenhauser Drive,  
East Tamaki,  
Auckland, New Zealand

PHONE: +64 9 920 6825  
FAX: +64 9 920 6830  
EMAIL: sales@lockernz.co.nz

## Palmerston North

Locker (NZ) Ltd  
23 Kelvin Grove Road  
Palmerston North  
New Zealand 4440

PHONE: + 64 6 356 1246  
EMAIL: nz\_sales@webforge.co.nz