

# LOOKBOOK 2018



A **valmont**  COMPANY



**PROJECT:** *University of South Australia Health Innovation building*

[www.locker.com.au](http://www.locker.com.au)

# AGT WHEAT BREEDING FACILITY, ADELAIDE



**PRODUCT:** Pic Perf - Facade



**ARCHITECT:** Ashley Halliday Architects



**PHOTOGRAPHER:** Rob Burnett

The Australian Grain Technologies (AGT) wheat breeding facility provides a state-of-the-art hub for innovative research that will aid Australian farmers for years to come. The site contains a specially designed greenhouse and laboratory alongside growth rooms.

**Locker Group** worked closely with Ashley Halliday Architects to produce a facade for the two main wings. This served to tie the buildings together and present an exciting first impression for anyone approaching the facility, as well as offering important sun shade.

The design was the first time that our Pic Perf panels were customised to feature square aperture holes. The finished result was a streamlined lineal look that reflected the forward-thinking work being done on the site.





**AGT WHEAT BREEDING FACILITY,  
ADELAIDE**





## FLINDERS MEDICAL CENTRE CAR PARK, ADELAIDE



**PRODUCT:** Pic Perf Directions - Facade



**ARCHITECT:** Cheesman Architects



**PHOTOGRAPHER:** Rob Burnett

The new car park at Flinders Medical Centre (FMC) in Adelaide was designed to compliment the facility's increase in services. Adding 1,260 extra car parking spaces, making a total of 1,820, this expansion means more parking for staff, patients and visitors.

Over 2,500 of Locker Group's Pic Perf Directions panels were formed and folded in this design to create a specific flanged perforation. The profile performed a dual function of providing protection against light spill, while also creating an effective and reliable visual barrier. This was important to provide vital privacy for patients visiting the facility by preventing a direct line of sight between the car park and treatment rooms.



# FRANKLIN ST CAR PARK, ADELAIDE



**PRODUCT:** Slotted Perforated Facade



**ARCHITECT:** Hames Sharley



**PHOTOGRAPHER:** Rob Burnett

The Franklin Street car park in Adelaide's central business district provides easy access to many of the city's amenities, and especially the Adelaide Central Market and Rundle Mall.

The designers wanted to use perforated metal to create a horizontal, linear look and give the car park's facade a smart and modern aesthetic. To achieve this we adapted our slotted perforated facade to include perforated sections bordered by unperforated margins. The result was a smooth flow between panels, allowing the eye to easily travel from left to right when standing in front of the car park.





## MIRVAC RIVERSIDE QUAY, MELBOURNE



**PRODUCT:** Pic Perf & Aero perforated metal Facade



**ARCHITECT:** Fender Katsalidis



**PHOTOGRAPHER:** Rob Burnett

Situated in the prime location of Melbourne's Southbank, Mirvac Riverside Quay is a bold architectural statement that incorporates the latest in sustainability and design innovation. Finished two months ahead of schedule, the 12-storey office space is targeting a five-star Green Star As-Built rating, and has already achieved a five-star *NABERS* Energy Rating. The building houses professional services giant *PwC* as well as offices belonging to the architects who designed it, Fender Katsalidis.

To create the eye-catching frontage for Mirvac Riverside Quay, two of Locker Group's perforated metal options were used in tandem. Alongside our popular Pic Perf panels this build adopted the Aero 400 range, which is perfect for use in decorative facades. The building's north-facing aspect means the powder coated aluminium panels receive maximum sunlight, with the combination of colours and perforations producing a visually captivating exterior for this futuristic design.

# MONASH LIBRARY, MELBOURNE



**PRODUCT:** Tranist F281 Facade Feature



**ARCHITECT:** Hansen Yuncken

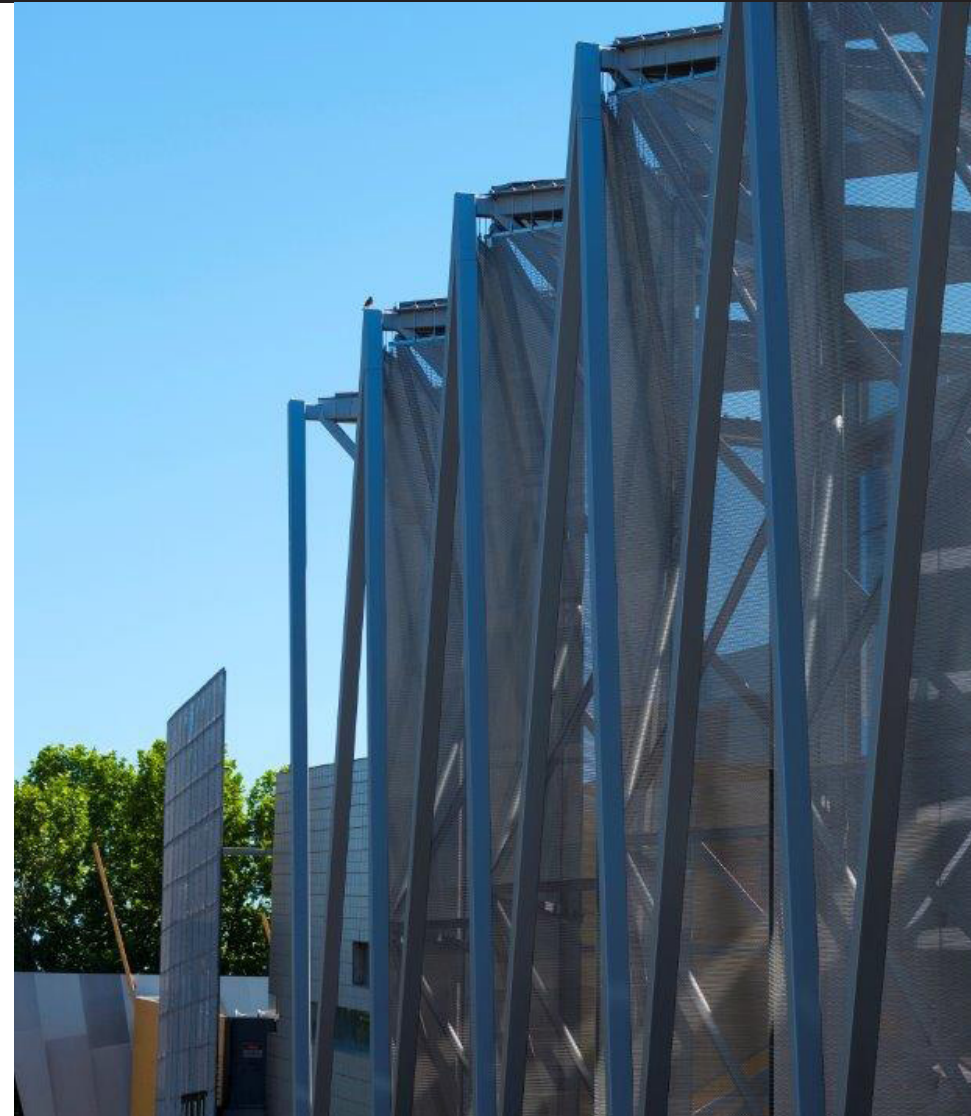


**PHOTOGRAPHER:** Rob Burnett

The transformed Library on Monash University's Caulfield Campus combines practicality and elegance to produce a truly inspiring learning environment. As well as doubling the seating capacity, the revamped structure caters for the latest in technological innovation to encourage study and participation.

From the glass roof to the transparent entrance, a central focus in the design of this building was maximising the natural light available to those inside. Locker Group's Transit F281 Facade Feature was used in the library's striking facade for exactly this reason. These wire mesh curtains provide the optimum balance between light filtration and privacy, allowing the students to benefit from the daylight outside without feeling overly exposed to passers-by.

The impressive frontage also provides an unmistakable point of entrance for anyone approaching the building, breathing new life into the central area of the Caulfield Campus.





**MONASH LIBRARY,  
MELBOURNE**





# MONASH UNIVERSITY TEACHING AND LEARNING CENTRE, **MELBOURNE**



**PRODUCT:** Perforated metal facade



**ARCHITECT:** John Wardle Architects



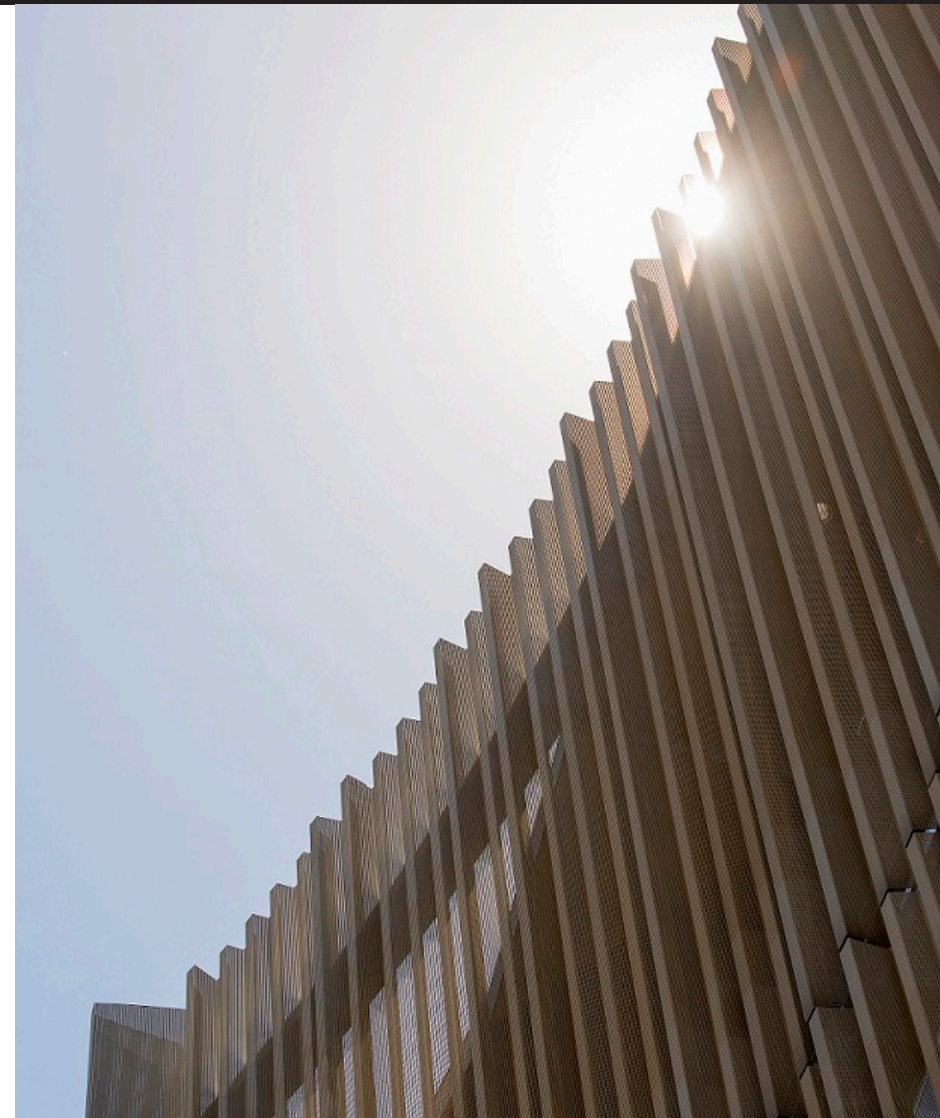
**PHOTOGRAPHER:** Rob Burnett

Returning to Monash, the 14-floor Teaching and Learning Centre on the University's Clayton Campus is another impressive addition to the establishment's portfolio.

From the outset, sustainability was a priority in this project, and Locker Group's perforated zinc sheets were the perfect answer. The combination of zinc's corrosion resistance and recyclability meant the university had no qualms in using our products to span the entire 11-metre facade.

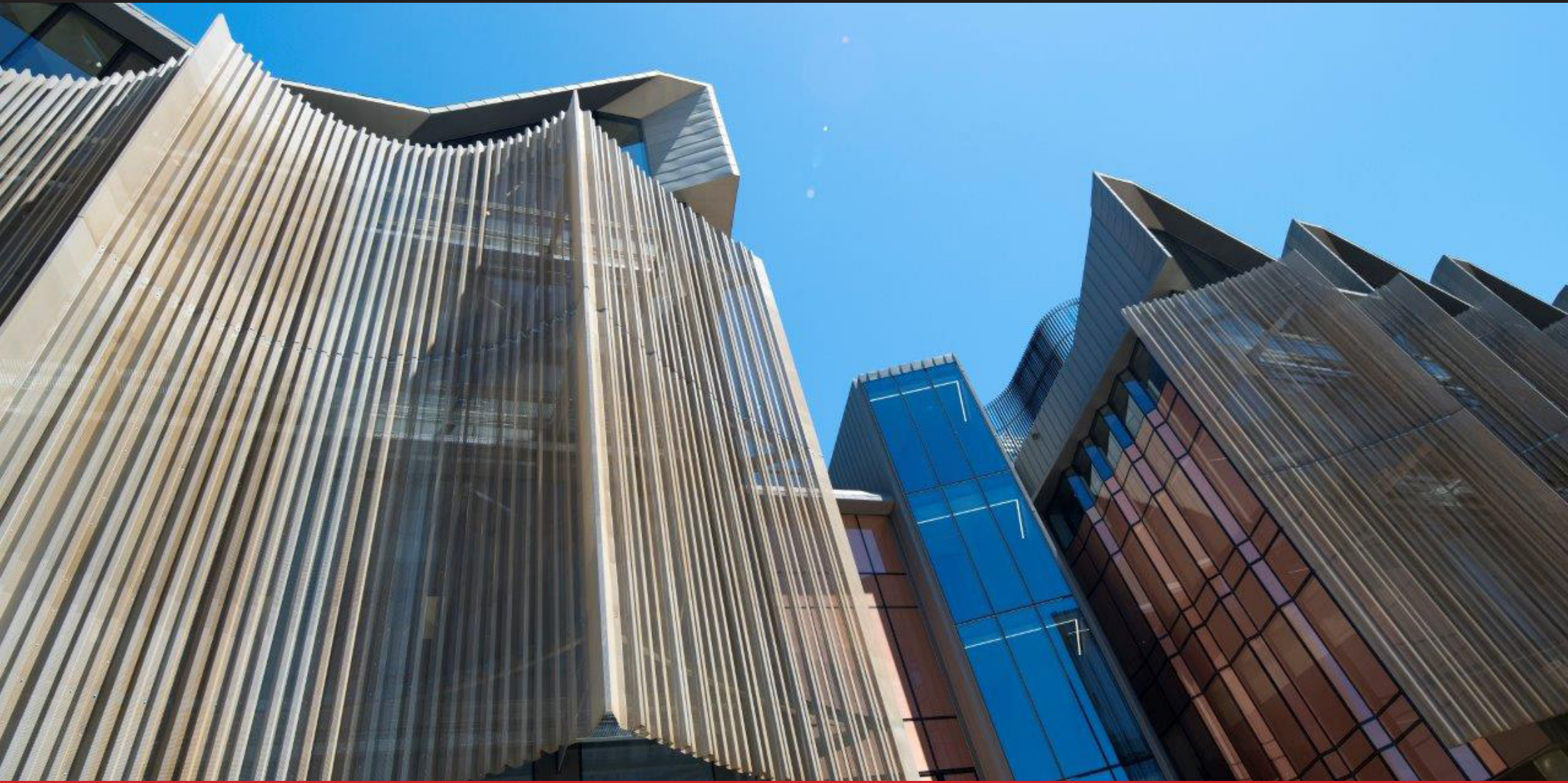
Our manufacturing team came up with a solution to reduce the amount of steelwork needed in the design, producing sheets so large that only two were required to cover the full height of the facade. By fixing each sheet only twice, at the top and bottom, the fabricator was able to reduce joinery work to the minimum required.

However, there's more to the build than pure practicality. The products used in the facade make for a truly awe-inspiring sight. The sheets on the north, west and east sides of the building include a variety of three perforation patterns designed to allow students a clear view of the world while they study.





**MONASH UNIVERSITY TEACHING AND  
LEARNING CENTRE, MELBOURNE**





# PWC SYDNEY, SYDNEY



**PRODUCT:** Planar 441 Ceiling Panels



**ARCHITECT:** Futurespace

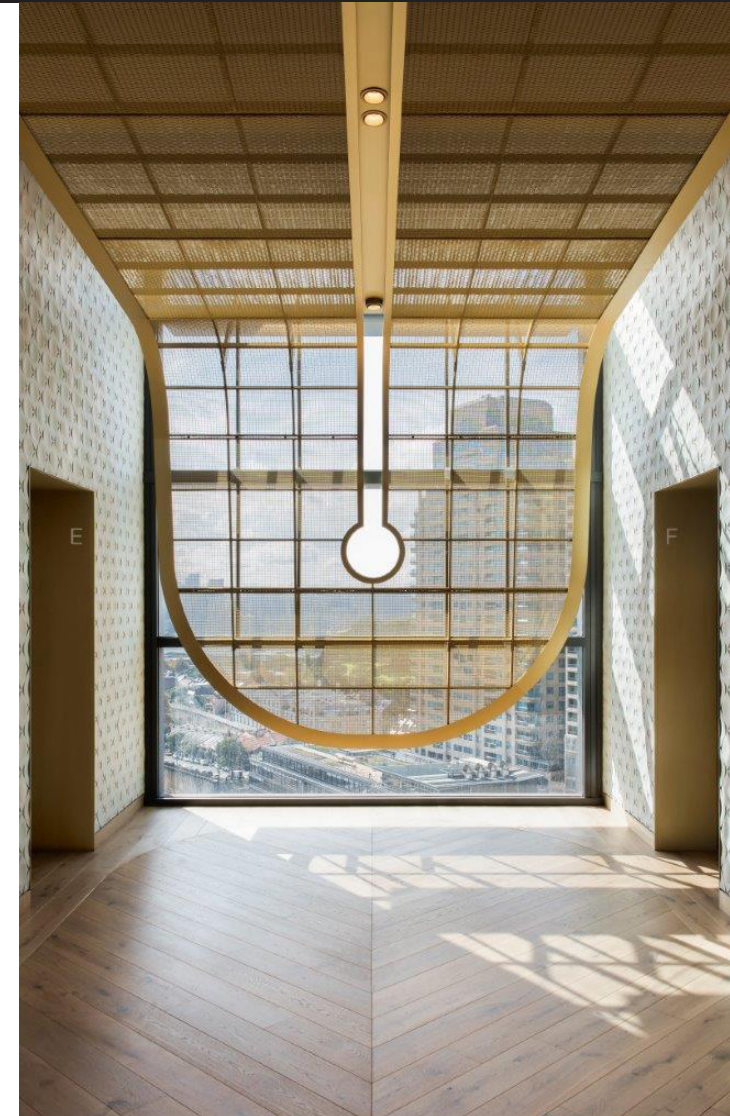


**PHOTOGRAPHER:** Rob Burnett

When Futurespace Interior Designers & Architects took on the task of modernising *PwC's* Customer Experience Centre in Barangaroo, Sydney it was clear that this was a project all about breaking the mould. The ambitious and unique design was intended to refresh the way the business went about its operations, and move away from the archetypal consultancy building. Incorporating a variety of work spaces, the layout was intended to encourage a collaborative and flexible workflow in line with the demands of *PwC's* customer base.

Tying this interesting facility together is Locker Group's Planar 441 Ceiling Panels. The woven wire mesh product was used to form a ribbon that runs along the ceiling, making an instant impact on visitors exiting the lift. Teaming up with the architects at Futurespace, and specialist joiners from Civardi Furniture, we supplied mesh that provided the desired transparent gold ceiling without sacrificing light, sound or aesthetic quality.

Perhaps most notable is the moment where the wire curves downwards to mirror the gradient of the foyer window. This classic and elegant point of entry provides a professional welcome to all clients that witness it.









# SA POWER SUBSTATION, ADELAIDE



**PRODUCT:** Pic Perf Facade



**ARCHITECT:** Tectvs



**PHOTOGRAPHER:** Rob Burnett

Located in the inner residential suburb of Kent Town, the SA Power Substation doesn't look like your average energy facility.

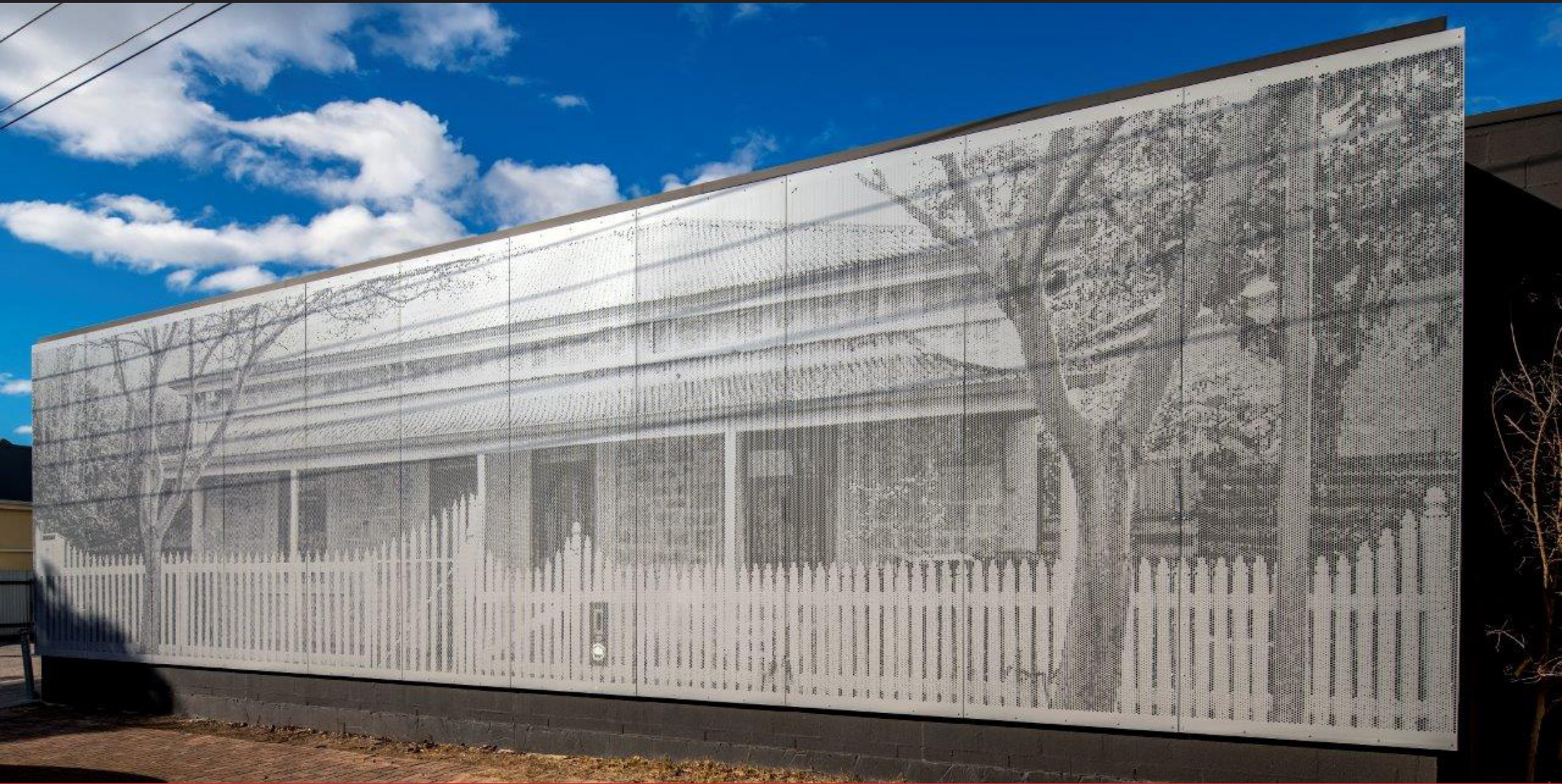
The area is typified by traditional Victorian-era properties, with few commercial or industrial premises to be found. Rather than create an eyesore in this otherwise quiet and charming area, architects Tectvs wanted a design that would blend seamlessly into its surroundings. Our Pic Perf Facade provided the solution.

Pic Perf allows a specific image or pattern to be punched into the metal sheet, producing a truly customised creation. In this case, an illustration was generated to mirror the classic appearance of the houses in the area, the perfect marriage of aesthetics and functionality.





**SA POWER SUBSTATION,  
ADELAIDE**





# UNIVERSITY OF SOUTH AUSTRALIA HEALTH INNOVATION BUILDING, **ADELAIDE**



**PRODUCT:** Expanded Metal Sun 3433A *Sunscreen panels*



**ARCHITECT:** Swanbury Penglase & BVN



**PHOTOGRAPHER:** Rob Burnett

The University of South Australia's new Health Innovation Building is home to the biggest hub for cancer research in the state. Spread across 14 floors, the building is one of the most complicated in the establishment's history, and is designed to contain state-of-the-art equipment as well as foster collaboration between researchers.

Perhaps most striking, however, are the windows. From the ground to the roof, the building's facade is lined with glass, allowing great natural lighting for those working within. However, to prevent glare, the design incorporated Locker Group's Expanded Metal Sun 3433A sunscreen panels. As well as fulfilling their practical function, these features contribute towards the project goal of achieving a *LEED* gold rating for sustainable design by optimising the facade for solar shading.

# YOUNG STREET CAR PARK, ADELAIDE



**PRODUCT:** Pic Perf Facade



**ARCHITECT:** Cheesman Architects

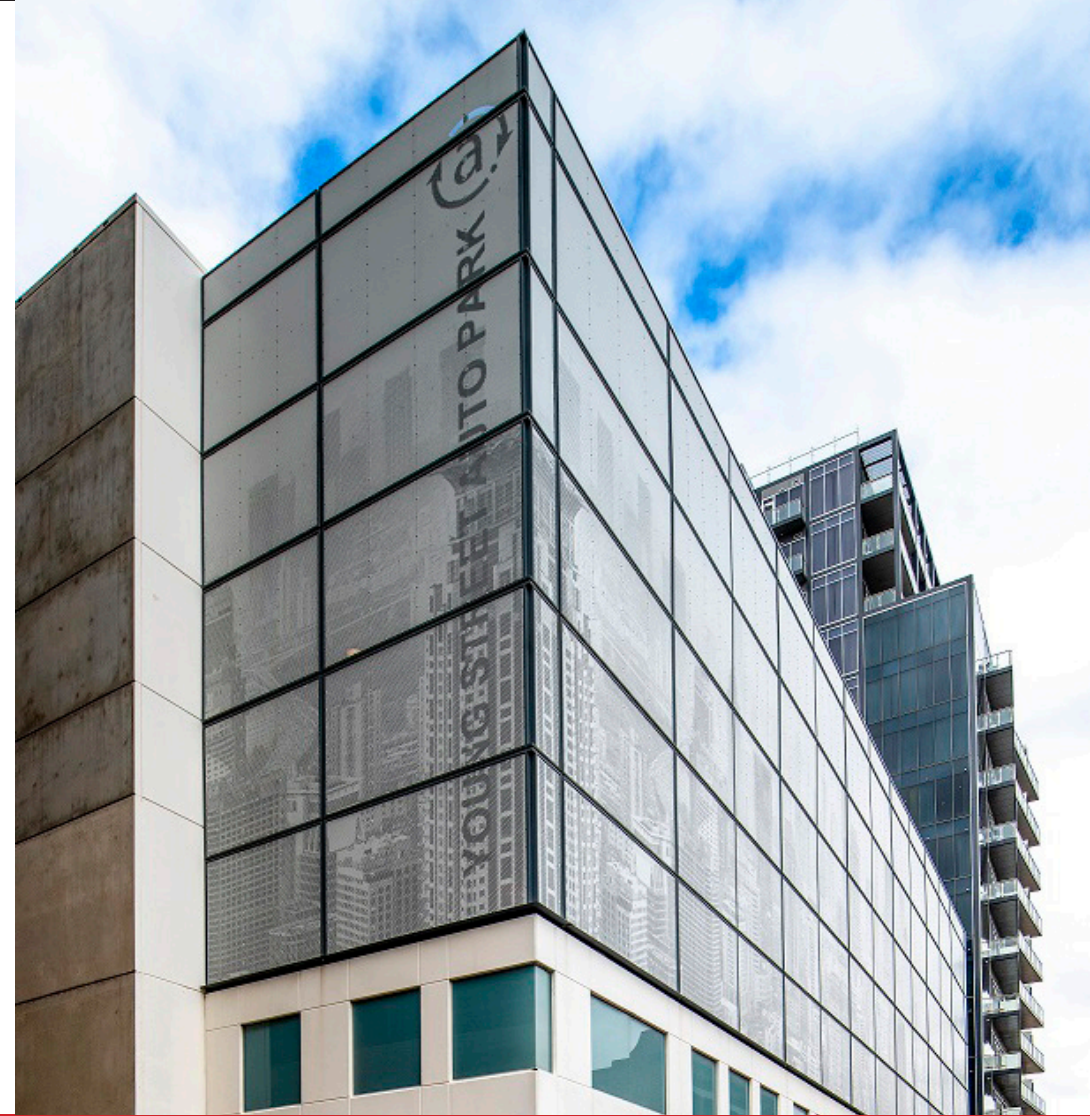


**PHOTOGRAPHER:** Rob Burnett

Situated in the heart of Adelaide's central business district, the Young Street Car Park is a handy drop-off point for much of the inner city, and the Gouger Street and Chinatown areas in particular.

Rather than producing just another central Adelaide car park, Cheesman architects opted to take advantage of Locker Group's Pic Perf technology to produce something more interesting. The facade features a beautiful image of the Shanghai skyline punched into the 525 panels used for the design.

However, the effect wasn't purely aesthetic. The perforations allow for air movement, providing excellent ventilation within in the car park - a real asset during the intense South Australian summer.





**YOUNG STREET CAR PARK,**  
**ADELAIDE**



# CONTACT

## Melbourne

Locker Group Pty. Ltd.  
2 Cojo Place,  
Dandenong South,  
VIC 3175, Australia.

ABN 99 004 353 922

Phone: +61 3 8791 1000

Fax: +61 3 8791 1099

Email: sales.vic@locker.com.au

## Sydney

Locker Group Pty. Ltd.  
5 Enterprise Circuit,  
Prestons,  
NSW 2170, Australia.

ABN 99 004 353 922

Phone: +61 2 8777 0400

Fax: +61 2 8777 0499

Email: sales@locker.com.au

## Brisbane

Locker Group Pty. Ltd.  
Gate 1, 661 Curtin Avenue East,  
Pinkenba,  
QLD 4008, Australia.

ABN 99 004 353 922

Ph: +617 3859 8300

Fax: +617 3859 8390

Email: sales.qld@locker.com.au

## Townsville

Locker Group Pty. Ltd.  
11 Forge Court,  
Townsville,  
QLD 4814, Australia.

ABN 99 004 353 922

Phone: +61 7 4760 6700

Fax: +61 7 4760 6799

Email: sales.fnt@locker.com.au



A **valmont**  COMPANY



# CONTACT

## Adelaide

Locker Group Pty. Ltd.  
358 Cormack Rd,  
Wingfield,  
SA 5013, Australia.

ABN 99 004 353 922

Phone: +61 8 8169 2350

Email: [sales.sa@locker.com.au](mailto:sales.sa@locker.com.au)

## Western Australia

Locker Group Pty. Ltd.  
41 Austin Avenue,  
Maddington,  
WA 6109, Australia.

ABN 99 004 353 922

Phone: +61 8 9358 9100

Fax: +61 8 9358 9111

Email: [sales.wa@locker.com.au](mailto:sales.wa@locker.com.au)



A **valmont**  COMPANY