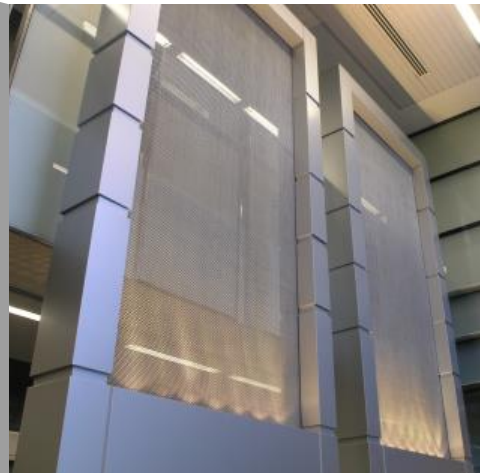


# Ikon 111



A valmont  COMPANY

<b>Profile</b>	Ikon 111
<b>Material</b>	S/S T316, T304
<b>Finish</b>	Mill, Electro Polished
<b>Max. Width</b>	2400mm
<b>Max Length</b>	30m
<b>Open Area</b>	58%
<b>Weight</b>	3.5 kg/m <sup>2</sup>
<b>Stock Status</b>	Custom Made
<b>Type</b>	Rigid
<b>Wire Dia</b>	0.9 x 1.25mm
<b>Aperture</b>	2.4 x 5.1mm
<b>Form</b>	Sheet/Roll



\* Typical Architectural Installation

## Applications:

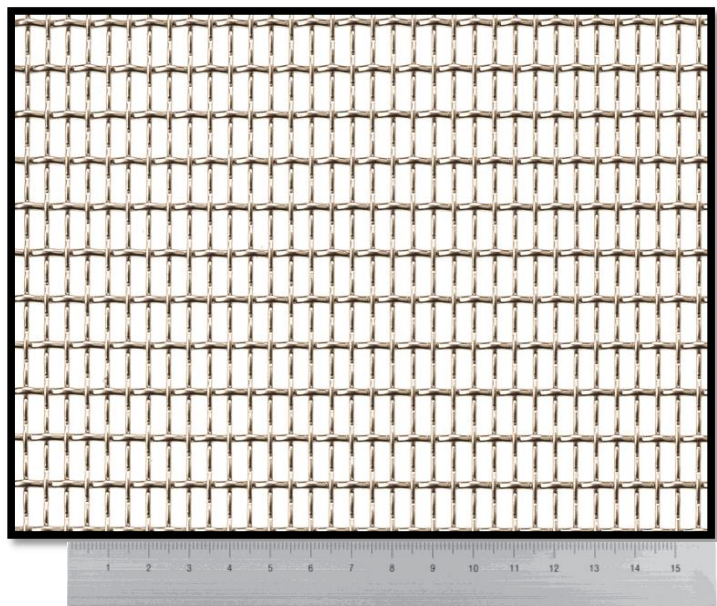
Ceilings, Infill Panels, Cladding

## Attachment Methods:

Locker Group Fixing systems;  
including Angle, Cap, Flat Bar or  
Tensioned. See website for  
more details.

## Extra Notes:

Dimensions are nominal



1800 635 947 (Aus)  
[www.locker.com.au](http://www.locker.com.au)

0800 285 837 (NZ)  
[www.lockernz.co.nz](http://www.lockernz.co.nz)

