

Screening Options

A number of extra options are available for the Locker Group heavy wire screen range, to customise screens to suit your individual application. For detailed advice on the most suitable option for your site, please talk to your Locker Group sales consultant.

Sheathing Materials

A choice of sheathing materials is available, depending on your application;

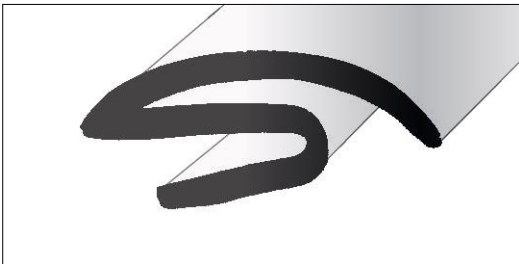
- Galvanised – most commonly used, mainly quarrying/mining
- Zinalume – used where some strength and heating of mesh required, medium conductivity ie brick plants.
- Copper – ideal for heated screen decks, high conductivity eg brick plants
- Stainless Steel – ideal for wet and/or food processing applications, low conductivity

Hook insertion material (for fine mesh)

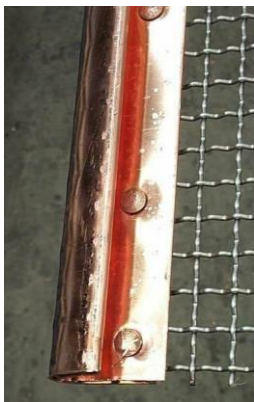
- - Canvas protects fine mesh from damage (prevents cutting along the edge of the sheath) during hooking process, and keeps mesh in hook.
- - Rubber - Keeps fine mesh in hook as above (use if canvas could contaminate your production process).

Rubber Sealing Strips:

These are stapled to the side of fine mesh screens, to help seal the deck; for use in Brick plants.



Cross section



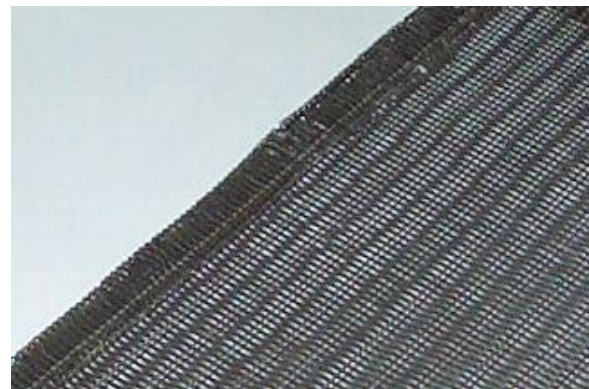
Rivets / Spot Welding

These fixing techniques are used to

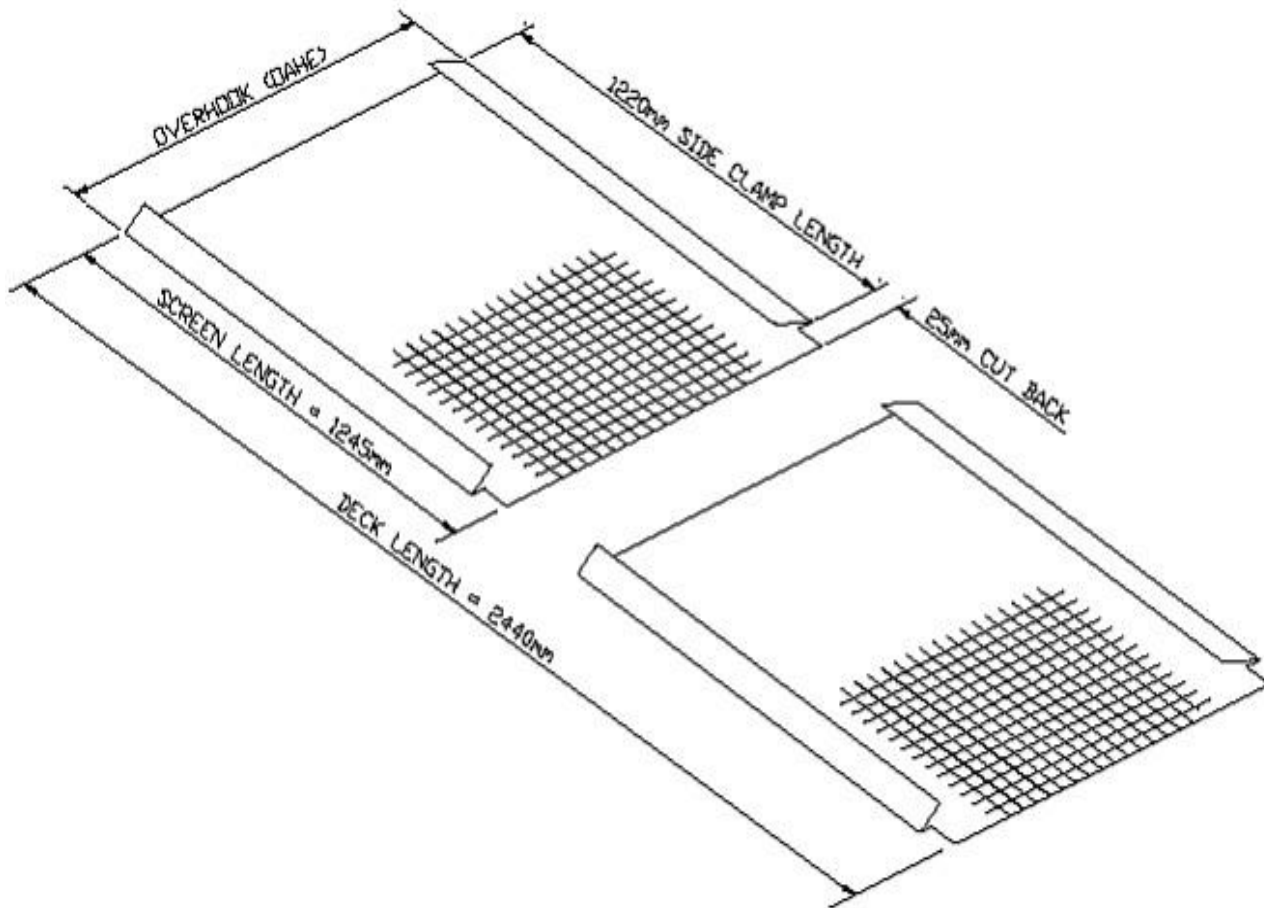
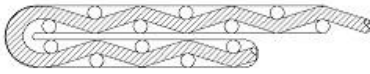
- prevent the mesh pulling out of the metal sheathed hook
- prevent the sheet metal opening up

These fixing methods are used in all mesh screen types as required, the following pairings are common:

- | | |
|-------------------------|---------------|
| Copper Sheaths | Copper Rivets |
| Galv Sheaths | Galv Rivets |
| Stainless Steel Sheaths | Turn unders. |



Fine mesh screens often utilise turn unders on the un-hooked sides to prevent fraying on screen edges. This is highly recommended for screens less than 0.35 diameter.



Overlaps

For apertures less than 16, it is often recommended to allow extra overlap between individual screens, to assist in sealing the deck.

For example, the screen deck length may be 4.88M long ie four individual screen cloths, each 1220mm long. Should these screens require an overlap (25mm) then the screen length will be 1245mm long.

Note: Overlaps are 25mm as standard, and are on one side only.