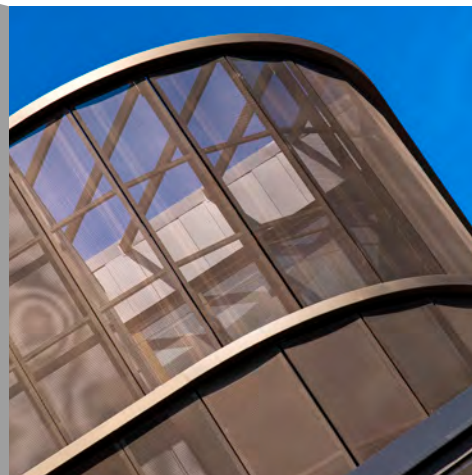


# Planar 441A



A valmont COMPANY

<b>Profile</b>	Planar 441A
<b>Material</b>	Aluminum
<b>Finish</b>	Mill, Powder coated, Anodised
<b>Max. Width</b>	2000mm
<b>Max Length</b>	3800mm
<b>Open Area</b>	57%
<b>Weight</b>	2.4kg/m <sup>2</sup>
<b>Stock Status</b>	Custom Made
<b>Type</b>	Rigid
<b>Wire Dia</b>	2.0mm
<b>Aperture</b>	2.8 x 20mm
<b>Form</b>	Sheet



\* Typical Architectural Installation

## Applications:

Ceilings, Balustrades, Cladding

## Attachment Methods:

Locker Fixing systems; including Angle, Cap, Flat Bar or Tensioned. See website for more details.

## Extra Notes:

Dimensions are nominal



1800 635 947 (Aus)  
[www.locker.com.au](http://www.locker.com.au)

0800 285 837 (NZ)  
[www.lockernz.co.nz](http://www.lockernz.co.nz)

