

# Fine 250



A valmont  COMPANY

<b>Profile</b>	Fine 250
<b>Material</b>	S/S T316
<b>Finish</b>	Mill
<b>Max. Width</b>	1220 mm
<b>Max Length</b>	30m
<b>Open Area</b>	37%
<b>Weight</b>	0.2 kg/m <sup>2</sup>
<b>Stock Status</b>	Stock
<b>Type</b>	Flexible
<b>Wire Dia</b>	0.038mm
<b>Aperture</b>	0.05mm
<b>Form</b>	Roll



\* Typical Architectural Installation

## Applications:

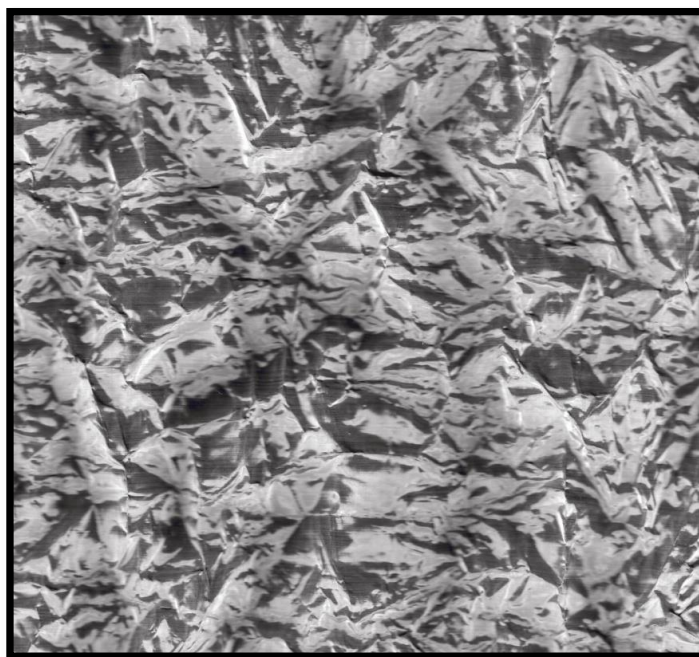
Infill Panels, Screens, Soft Furnishings

## Attachment Methods:

Locker Fixing systems; including Angle, Cap, Flat Bar or Tensioned. See website for more details.

## Extra Notes:

Fine 250 can be sewn with a traditional sewing machine. It retains its crinkled format no matter how its installed. Dimensions are nominal



1800 635 947 (Aus)  
[www.locker.com.au](http://www.locker.com.au)

0800 285 837 (NZ)  
[www.lockernz.co.nz](http://www.lockernz.co.nz)

