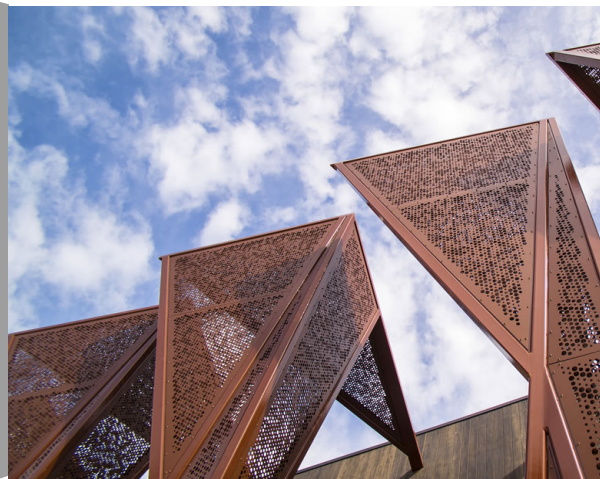


# Aero 400



A valmont COMPANY

<b>Profile</b>	Aero 400
<b>Material</b>	Aluminum
<b>Finish</b>	Powder Coat or Anodise
<b>Max. Width</b>	1500 mm
<b>Max Length</b>	5000 mm
<b>Open Area</b>	40% *
<b>Weight</b>	4.90 kg m <sup>2</sup> *
<b>Stock Status</b>	Custom Made
<b>Thickness</b>	1.60mm, 3.0mm, 4.0mm or 5.0mm



\* Typical Architectural Installation

## Applications:

Balustrade Infills, Decorative, Cladding, Facades, Ceiling Tiles

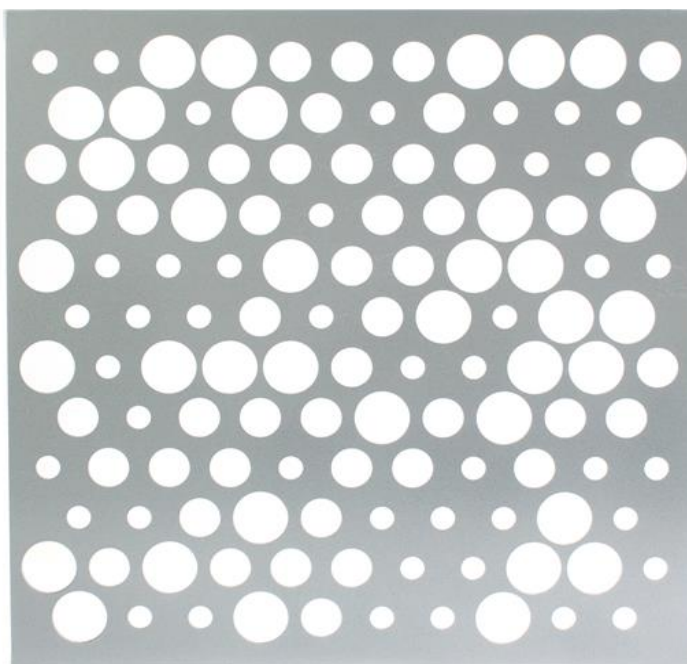
## Attachment Methods:

Locker Atmosphere™ System or Screw Fixed (Use Locker Isolators LF11.0)

## Extra Notes:

Other materials and thickness can be manufactured upon request.

\* OA & weight calculations are based on 3.0mm Aluminium Other versions of Aero are available to meet your exact specifications. While the ratio of hole sizes may need to be constant, the hole sizes and resulting open area can be adjusted.



1800 635 947 (Aus)  
[www.locker.com.au](http://www.locker.com.au)

0800 285 837 (NZ)  
[www.lockernz.co.nz](http://www.lockernz.co.nz)