

Cross Tension Installation Guide

Procedure to Remove and Replace Tensionable Screen cloth

- Woven Wire
- Poly Ripple
- Polyurethane
- Rubber



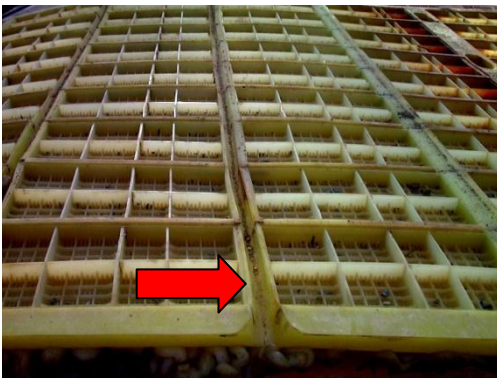
Instructions

- 1. Removal Of Worn Screencloth**
- 2. Clean Down Deck**
- 3. Inspect: Deck, Side Clamps & Bolts**
- 4. Installation of New Screencloth**
- 5. Tensioning**
- 6. Maintenance**

1. Removal of Worn Screencloth

- Look for isolated worn areas underneath old cloth.
- Look for wear patterns at longitudinal stringer bar support locations.
- Look at the hook outer surface for isolated wear areas.
- Look inside the hook for uneven wear caused by the side clamp bar.
- Look for wear patterns near boltholes to see if the cloth was centralised when installed.
- Look for prematurely broken wires which may be caused by:
 - worn surface (end of useful life)
 - incorrect tensioning of screen
 - incorrect camber
 - screen overload (excess tonnages)
 - oversize material (designed particle size exceeded)
 - faulty material/workmanship

Note: Broken wire location does not necessarily indicate a particular problem area in the screen. Wires normally break near pivot points such as the hook area, longitudinal stringer bars and centre hold-down bars.



2. Clean Down Deck

Ensure that all material is cleaned from:

- Cross beams
- Support angles / channels
- Side angles / channels
- Longitudinal stringer bars

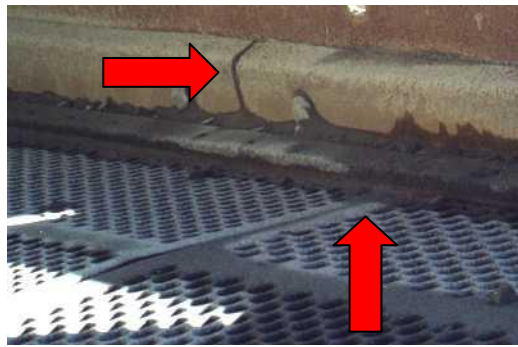


3. Inspect Deck

- Look for structural failures on the whole deck including underneath the deck.
- Check that the camber is correct.
- Check that stringer bars are straight and parallel and that the capping is in good condition.
- Check that the side angles / channels are straight and flat.
- Check that the side plates are straight and parallel to the support stringers.
- If lifter tabs are fitted check that they are in the correct position.

Inspect Side Clamps

- Check to ensure that the clamp bars are straight and not excessively worn.
- Side clamp bars must be the same length as the screencloth.



Inspect All Bolts

- Make sure that all bolts are in good condition and the correct length; that is, not too long.
- If in doubt use new bolts.
- Don't pack nuts with more than one washer (use sleeves in place of multiple washers)



4. Installation of New Screencloth

Inspect cloth:

- Ensure that cloth is correct type and duty for the application.
- Ensure cloth is manufactured to fit correctly over stringer bars and centre holes.
- Ensure that the over hook dimensions are correct. That is 40mm less than the inside plate dimensions for wire and poly. Rubber will be less again, allowing for stretch factor.
- Ensure cloth is equally positioned from both sides and will rest on side angles.

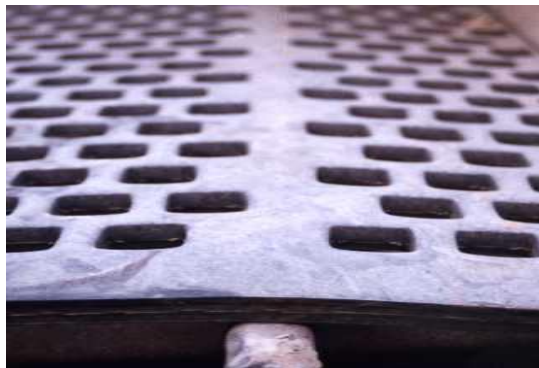


- Engage side clamps in hook and seat correctly.
- Locate clamps under lifter tabs where fitted.
- Ensure side clamp is correct way up.



5. Tensioning

- Slightly tension by alternating between bolts. Only apply a small amount of pressure to each bolt.
- If there is a centre hold-down ensure that the mat is centralised correctly and there is slight tension across the screencloth.
- Fit centre hold-down bars and clamp down tightly to recommended bolt torque. M16 140 Nm.
- Increase tension alternately on side clamp bolts in small increments until mat is 'drum' tight, approx 100-120 Nm.
- Rubber cloths should finish approx 15mm from side plate and apertures should not be distorted.



THE SCREENCLOTH IS NOW INSTALLED BUT NOT READY FOR USE

6. Maintenance

- Run machine unloaded for 10 minutes. Then recheck bolt tightness and cloths for alignment and tension.
- If alterations occur, run machine for a further 10 minutes and recheck.
- Check screen after 4 to 6 hours of production.
- Check machine, sub-frame and screencloth for wear, damage and bolt tightness/tension every 24 hours of production.

