

Rubber Cross Tension Mats

Locker Group rubber tension mats are manufactured using 2 layers of premium quality wear resistant rubber with a tyre cord reinforcement between the layers.

Thinner cloths (3, 5, 7, 10 & 15mm thick) have single ply fabric reinforcement while 20, 25 & 35mm thick cloths have 2 layers. The polyester fabric reinforcement allows for correct and constant tensioning of the cloth.

Some of the advantages that rubber tension mats have over other screening media include;

- Fit most manufacturers' screens.
- Highly flexible - reduced pegging & blinding
- Highly flexible - improved stratification
- Reduces noise pollution
- Suitable for a wide variety of applications

Locker Group rubber tension mats are ideally suited for high frequency screens with longitudinal support bars. They are effectively used in primary, secondary and tertiary screening applications as well as rotary trommel screens.



Screen Cloth Selection

Cloth Thickness

Consideration must be given to the

- maximum particle size of the feed
- drop height of material on to the screen cloth
- screen loading

Aperture shape selection

- Square Apertures
- Round Apertures
- Slotted Apertures

All apertures come in a range of staggered and in line patterns.

Aperture size selection

As a general rule the aperture size for rubber screens is usually larger than that for a conventional wire screen. Aperture size is determined by 3 main factors: -

- screen cloth thickness
- screen inclination
- rotation of the exciter mechanism.

A good "rule of thumb" for punched aperture screens: - *The aperture dimension should always be greater than the cloth thickness.*

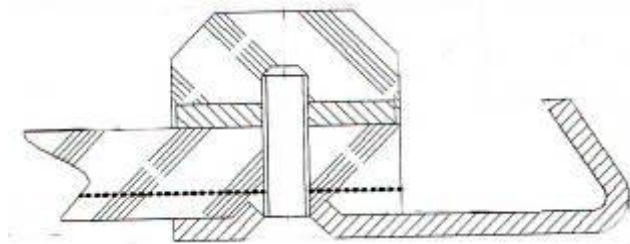
Aperture selection is an art, not a science

While all efforts will be made to ensure accurate product grading from Locker Group rubber screen cloths, we cannot guarantee your final product sizing due to the nature of the product and its environment.

Note:

Rubber Screen mats with a 10mm aperture or less will automatically be provided with a discharge end dust flap unless requested otherwise.

Hook Edges



One of 4 Hook Types Available – depending on cloth thickness