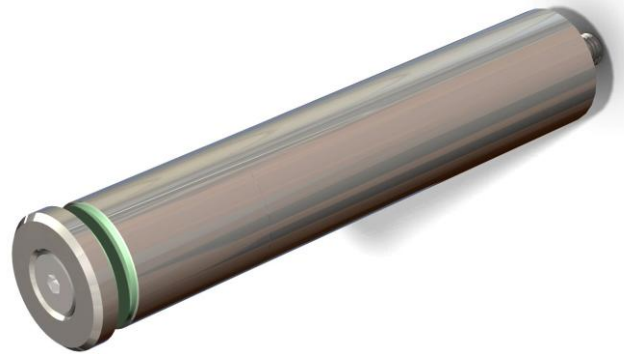

System: Spigot

Application: **Internal/External**

- **Facades**
- **Space sculpturing**
- **Sunscreen Panels**
- **Feature panels**

Category: L4 spider and spigot range attachment solutions

Product Range: Expanded, Perforated and Wire

Material: Stainless Steel T304 & Mild Steel (Internal), T316 (External)

Finishing: Mill, Polished, Electro-Polished, Powder Coated, 2 pack epoxy and Electro-plated.

Characteristics: The L4.3 spigot is an effective single point attachment system which can be directly fixed to the existing structure without the need for a secondary support structure. The spigot aids when the design calls for an accentuated element, and is compatible with a wide range of Locker Group products.

The spigot is designed with inherent flexibility so the distance from the base structure to the mesh can be varied to match the design intent.

Related Drawings:

- [L4 Spigot 1 point PDF](#)

Related Systems: There are 4 standard spider/spigots sets that make up the L4.0 system

- L4.3 45mm Spigot
- L4.1 45mm
- L4.2 25mm
- L4.4 Cap Spigot

This information is provided as a guide only in respect to Locker Group products and intended applications.

- The information in this specification was prepared using technical data and market based experience available at the time of printing. While Locker Group endeavors to update this information and maintain the accuracy of its contents, Locker Group cannot guarantee that the information provided is wholly comprehensive.
- Locker Group recommends that you conduct such additional investigations as may be necessary to satisfy yourself of the accuracy, currency and comprehensiveness of the information on which you rely in using and handling the product.
- If you require further information, please contact Locker Group.

Load:	<p>An installation utilising Spigots can be tailored depending on the design requirements, however for a 'standard' installation, there is a maximum 4 Spigots can support.</p> <ul style="list-style-type: none">• perforated panels - maximum size is 1000mm x 1800mm• wire panels - maximum size is 1200mm x 2000mm• expanded panels - maximum size is 1000mm x 2000mm <p>Larger sheet sizes can be supported, but will require Spigots at more frequent intervals.</p> <p>Load is dependent on the product chosen and the application, please refer to the product axial load table for more details and discuss the project with a Locker Group Technical Representative.</p>
Wind Load:	<p>Wind load should be measured on site and consideration given to the suitable open area.</p>
Additional Notes:	<p>The appearance and durability of the final product is the responsibility of the builder and installation contractor. To achieve the indicated result, products must be installed in accordance with the recommendations above.</p>
Caution:	<p>The components of the L4.3 system are specifically design for the loads stated and have been designed as a complete system. Use of single elements in isolation is not recommended, and can not be guaranteed.</p> <p>Powder coated substrates: drilling holes or damage during installation on powder coated panels can break the seal formed for the protection of the underlying metal. This leaves the substrate exposed to potential corrosion where the seal has been broken. Any damage should be repaired immediately in accordance with coating manufacturer's instructions.</p>
Australian Standard:	<p>AS 1170.0 -1170.2 Structural Design Actions must be used in conjunction with this document</p>
Cleaning:	<p>Any metal exposed to the environment needs to be regularly cleaned to remove particles which may cause tea staining and corrosion. This is especially important in coastal and high traffic city/urban locations.</p>

This information is provided as a guide only in respect to Locker Group products and intended applications.

- The information in this specification was prepared using technical data and market based experience available at the time of printing. While Locker Group endeavors to update this information and maintain the accuracy of its contents, Locker Group cannot guarantee that the information provided is wholly comprehensive.
- Locker Group recommends that you conduct such additional investigations as may be necessary to satisfy yourself of the accuracy, currency and comprehensiveness of the information on which you rely in using and handling the product.
- If you require further information, please contact Locker Group.